



# AMT



ZERO EMISSION

## AMT RAILROAD ATV

TRANSPORTING  
INSPECTION  
MEASURING  
MAINTENANCE ON TRACK





# RAILROAD ATV'S

AMT railroad ATV's are designed to make working on and around the track more efficient and easier.

ATV's are used for a long time for working in rough terrain such as water and forest management. Operating the machine is very simple, the technique is robust and the maintenance level is low.

The AMT ATV's are suited for 2 till 6 persons and small loads. Easy acces, and ready for action on the rail in less then a minute. Hydraulic powered railaxles and electrical safety display.

The railroad ATV's are designed according the European legal requirements set out in EN 15746.

Because of the low own weight, the ATV can be transported on a smal car trailer or van. The ATV can be equipped with 2 light aluminium lorries (with load capacity of 400 kg or 2 seats each!)

With a free space according the G1-G2 European track profile the AMT railroad ATV doesn't interfere the infrastructure and is almost everywhere ready to

ATV (Quad)	
Basicvehicle	Polaris Sportsman
Measurements	2500 x 1600 x 1400 mm (L x W x H) on track
Weight	330 kg
Motor	Petrol 44Hp, AWD drive, Hi-Lo gearing
Speed (street)	limited 15 km/h
Railsystem	
Wheels	340 mm UIC or customerspecific
Controller	Electro- hydraulic actuated
Loadcapacity	max. 2 persons + 100kg (work tray)
Weight	350 kg
Speed	limited 20 km/h
According	EN 15746 1/2

ATV (Buggy)	
Basicvehicle	Polaris Ranger
Measurements	3000 x 1600 x 1850 mm (L x W x H) on track
Weight	815 kg
Motor	Full Electric, Petrol or Diesel, AWD drive, Hi-Lo gearing
Speed (street)	limited 30 km/h
Railsystem	
Wheels	340 mm UIC or customerspecific
Controller	Electro- hydraulic actuated
Loadcapacity	max. 2-6 persons + 225kg (work tray)
Weight	350 kg
Speed	limited 20 km/h
According	EN 15746 1/2



# EFFICIENT ON TRACK

## APPLICATION RANGE:

The flexible transport of people and tools over and along the track. Ideal for:

- Passenger transport (up to 10 people)
- Inspections and measurements
- Minor maintenance
- As rescue/ emergency system

## BENEFITS:

- In accordance with EN 15746
- Suitable for all European tracks
- Low purchase costs
- Low maintenance costs
- Low fuel use (1:15) EURO emission engine
- 100% Electric (standard +50 km range)
- On board charger 230VAC - 48VDC

## HIGH ON WHEELS:

- Applicable in almost every profile trackprofile
- No rubber in contact with track
- No interfering with the infrastructure
- Maximum traction (in combination with AWD)

## LIGHTWEIGHT:

- To be transported in a van or trailer
- Easy to get in-out track

## MAXIMUM SECURITY:

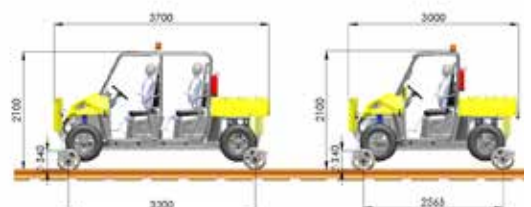
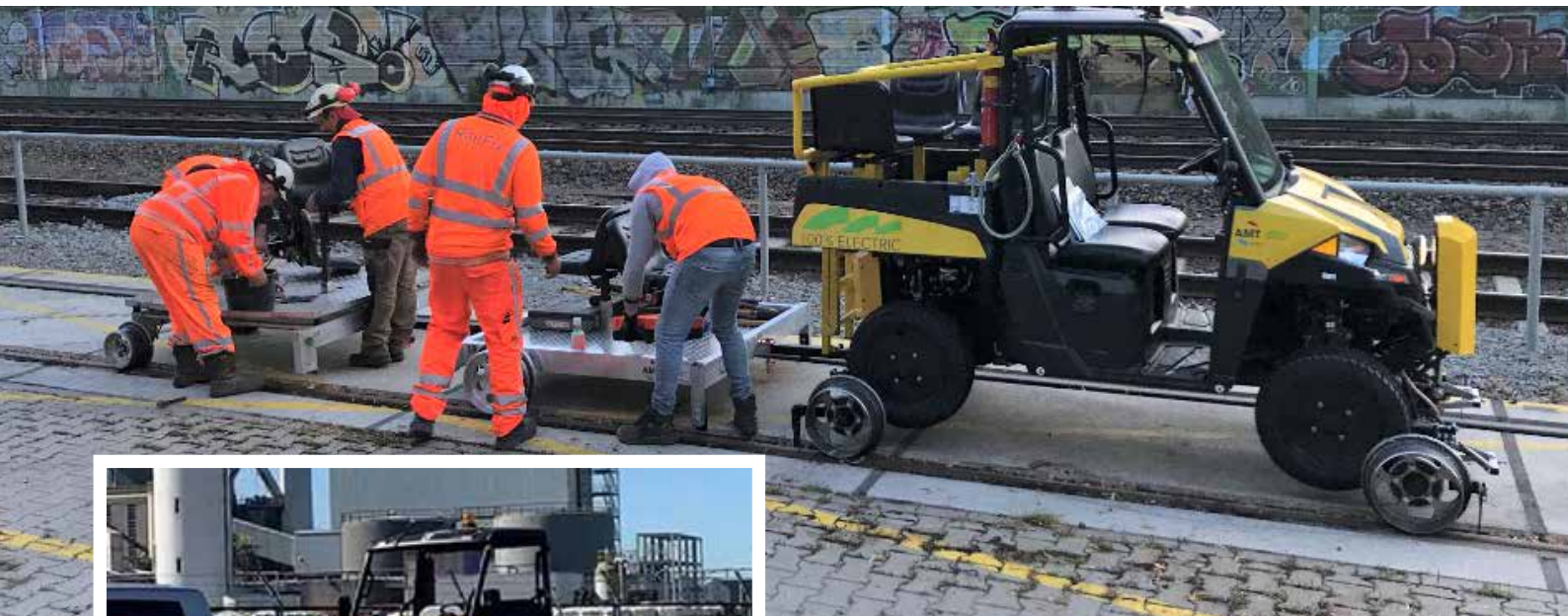
- Speedlimiter 20 km/h
- LED lights en optional working lights
- Electronic safetycheck
- Max. grip with all wheel drive and profiled drums
- Optional fail-safe brakes on each railwheel

## FLEXIBEL:

- For on track and off-road
- Suited for 2 persons and working tools
- Suited for 2 railtrailers with each 350kg or 2x2 person load
- Suited for normal- tram and metre Gauge with the modular axle change system

## ATTACHMENTS:

- Lawn mower unit
- Broomunit
- Snowplough
- Weed control spray system





# AMT GROUP

Some jobs require special modifications. Whether it is a complete reconstruction, an upgrade, overhaul or reprofiling, or supplying new parts or special tools - at AMT you can find it all.

AMT is your partner with an established name. In addition to track and railway vehicles, we also develop and build special machines, robots, and automated systems, machined parts, and production tools.

All our finished products have one thing in common: they are custom-built.

During the manufacturing process our engineers also act as the project manager, keeping the lines of communication between design and implementation short and ensuring the customer has a single 'go to' person for any question or concerns.

If you are interested in our services and/or our products or if you have any questions, please contact us on  
+31 (0)76 5015912 or [info@amtgroup.nl](mailto:info@amtgroup.nl)



AMT Rail Road BV, Rithmeesterpark 11, 4838 GZ Breda, NL  
T +31(0)76 501 59 12 [www.amtgroup.nl](http://www.amtgroup.nl)